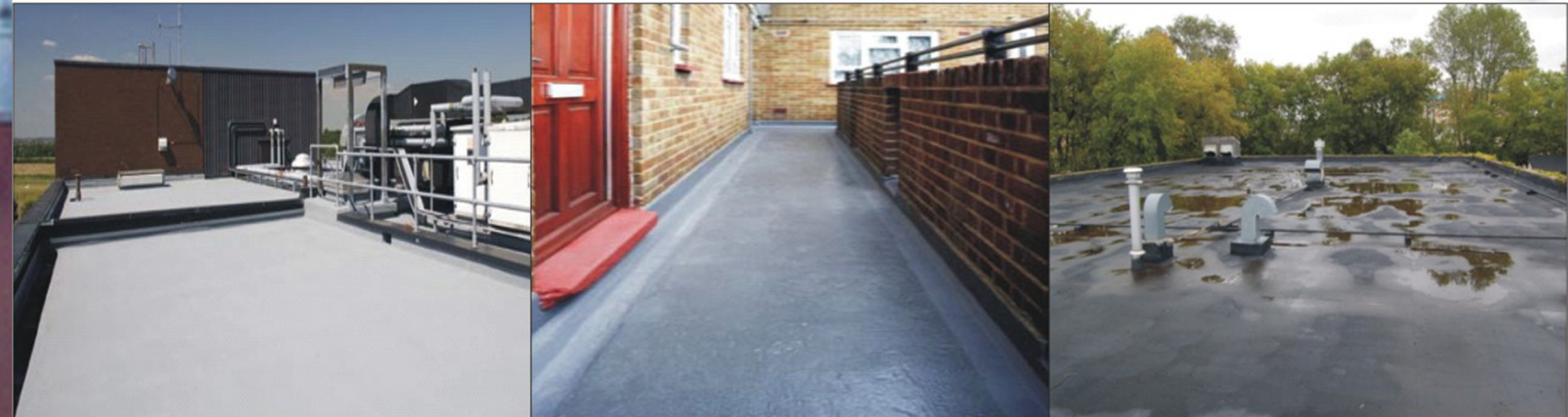




MORSEL™

Liquid-Applied Waterproofing

Systems for roofs, balconies, walkways
Water storage tanks



High performance coatings technology has developed at an incredible rate since the early seventies. Morsel Coatings are pioneer in this has developed an unparalleled range of intelligent systems designed to provide long-term waterproofing protection to buildings.

By virtue of their design and construction, roofs and balconies are constantly exposed to the effects of the weather. Water seepages can cause an incalculable amount of damage in a very short period of time. Leaking roofs, dampened walls for example, cost investors millions of Rs. for maintenance annually. By investing in a Morsel coating system you are not simply waterproofing a roof or balcony; you are creating a safer, cleaner environment for your employees or tenants for many years to come.

Morsel Enggtech Pvt. Ltd.

Ganeshan Complex, 146, Gumanpura Kotri Road,
Kota 324007 Rajasthan. INDIA
Phone : 0744-2392492, 2390292, 2391392 Fax 2391392
Email : info@morsel.co.in, morsel@rediffmail.com
Website : www.morsel.co.in

Proven Quality, Leading Technology

Proven Quality, Leading Technology

Understanding how Morsel liquid-applied waterproofing systems work

Cold liquid-applied waterproofing systems are advanced polymeric materials that, when applied to an existing surface provide a seamless, protective coating

The products can be used on at, pitched (even domed) roofs, balconies and walkways. Being paint-like in nature, liquid coatings are highly versatile. With traditional resurfacing materials, like felt and asphalt, it can be difficult to achieve a 100% waterproof surface because of their limited detailing capabilities. Pipes and surface-mounted roof hights cannot be easily protected by felt and asphalt materials Where as, Morsel coatings can be applied anywhere a paint brush can reach - providing total and seamless protection A long-term solution to the problem of water seepage, liquid- applied coatings are highly durable and long lasting, When the time comes for first full maintenance our products can be easily refurbished by the application of an additional coat. This makes liquid applied systems a cost effective repair material and a superior alternative to traditional substrates.

Morsel systems have been designed to withstand the toughest climatic conditions and are compatible with the majority of roof and balcony substrates.

Key characteristics of liquid-applied waterproofing systems

Cold applied	Eliminates hazards / inconvenience of using hot applied systems
Applied to existing	Roofs can be safely repaired / refurbished without any risk / disruption
	Substrate to building occupants, contents or operations.
Waterproof	Prevents water from entering the structure.
Vapour permeable	Allows moisture vapour within the building to escape.
Easy application	By brush or roller - details are fully coated to maximum protection.
High solids	Provides high build, cost effective and long lasting performance.
Joint free	Encapsulates the roof to provide a completely seamless coating, which eliminates the risk of leakages. No joints = no leaks
High In strength	Tough, durable long-lasting membranes.
UV Stable	Enables the systems to resist all types of weather conditions.
Easy to maintain	Systems achieve excellent through life costs.

Flame-free technology means no hot works...

The hazards associated with hot works in roof refurbishment have been well publicised. Less advanced technologies that are applied using heat guns e.g. felt or asphalt, can present significant safety risks during application.

The major advantage of liquid applied coatings is their 'cold' nature which makes them extremely safe to install and significantly reduces insurance premiums.

ROOF TOP COATINGS

	Black Seal 4011	Tar Thane 4012	Seal Coat 4014	WT Epoxy 4015
Color	Black/Brown	Black	Light Grey	Off White
Working Time	60 Minutes	30 Minutes	30 Minutes	30Minutes
Functional Cure	5 Hrs	5 Hrs	1 Hrs	4 Hrs
Chemical Resistance	Fair	Fair	NA	Fair
Temp. Resistance	80°C	90°C	90°C	80°C
Available Pack	20Kg	20Kg	4 Ltr.	2 / 8 Kg
	4011 Black Seal is bituminous Liquid water Proofing Membrane which is a highly elastic, solvent free, nature rubber bituminous water proofing system. it is a one component pack. It is supplied for ready-to-use cold application. Coating can be painted over if a light, reflective surface is required. Black Seal 4011 is suitable for both indoor and out door sealing work.	4012 Tar Thane is cold applied, no heating is required Chemically curing type, no external curing required can be used on existing bitumen/tar felt for repairing. Bonds strongly to cement concrete, asbestos and steel surface, remains unaffected by UV exposure. is resistant to water, acid, dilute alkali and salt solutions cures to a tough, and abrasion resistant coating and is resistant to fungus and micro organism growth.	4014 water proofing coating is a two component polyurethane based coating Morsel 4014 water proofing coating is characterized by Excellent adhesion to concrete, metal, floors High abrasion. Good water resistance, colour stability Excellent UV algae & fungi resistance Smooth seamless coating easy to clean.	4015 WT Epoxy is a two compound epoxy after mixing can be thinned down with water After curing has excellent water & chemical resistant adhesion hardness, Can be applied over Damp Surfaces. As WT Epoxy is solvent free does not pose health hazards.

Application of Morsel liquid-applied waterproofing systems



- A - Prepared roof surface
- B WT Epoxy 4015 applied coat
- C - Top coat(s)4011/4012/4014

- The whole surface is cleaned by chipping the old treated material like tar felt.
- A very unique product of Morsel 4015 is applied which penetrates in the concrete and fills all micro capillary it even act as a agent to indemnify dampness and water molecules present in the concrete
- All cracks are then grooved in v shape and morsel poly sulphide sealant is filled, this is a elastomeric sealant which even in summers can expand due to thermal expansion and in winter can contract leaving no crack to re-appear.
- Then a coating of morsel 4011/4012/4014/5114 (as required) is provided which develops a over coat and bars any further penetration of water in the concrete this coating is wear resistant from foot traffic UV resistant and heat resistant which keeps the room cool in extreme summer.

Suggested Applications Areas

Products

New /Old Roof House Hold	Morsel WT Epoxy# 4015 + Morsel # 4014
New/Old Roof Commercial /Factorys	Morsel WT Epoxy# 4015 + Morsel # 4012
Old & Applied Waterproofing(Tar Felt)	Morsel 4011

Wet & Dampened

Morsel WT Epoxy# 4015 + Morsel # 5114

Water Storage Tanks

Morsel WT Epoxy# 4015 (Three Coats)